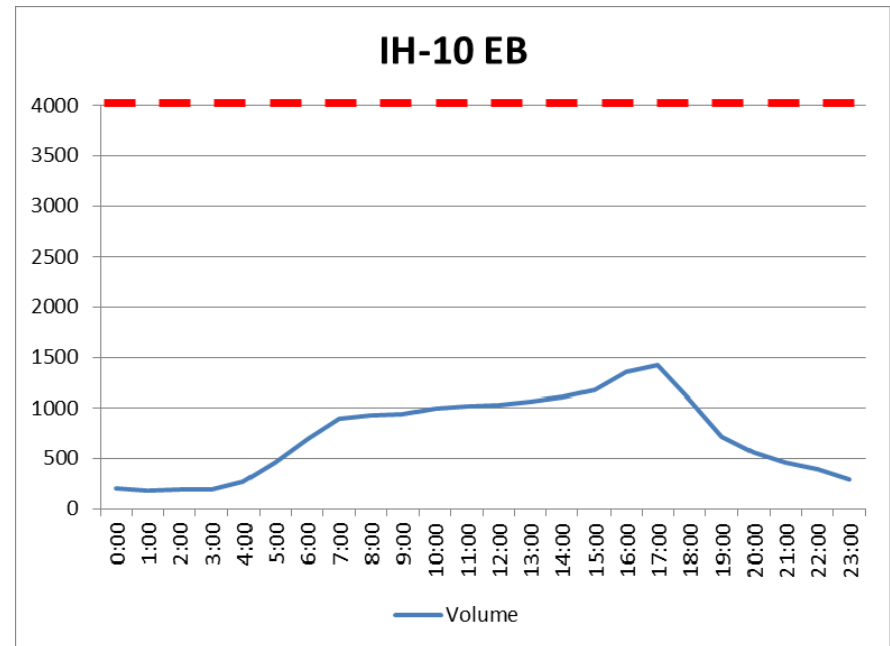
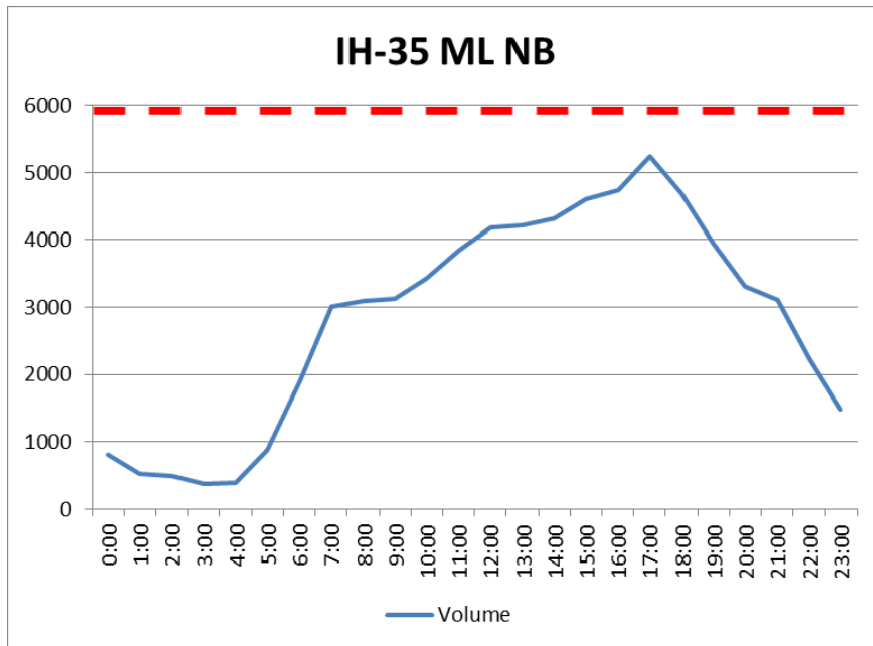
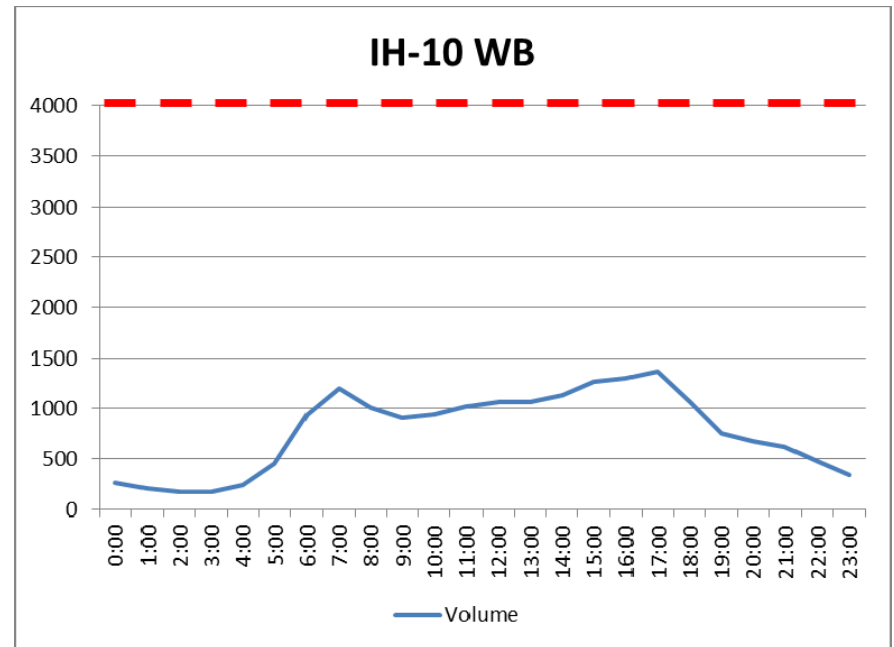
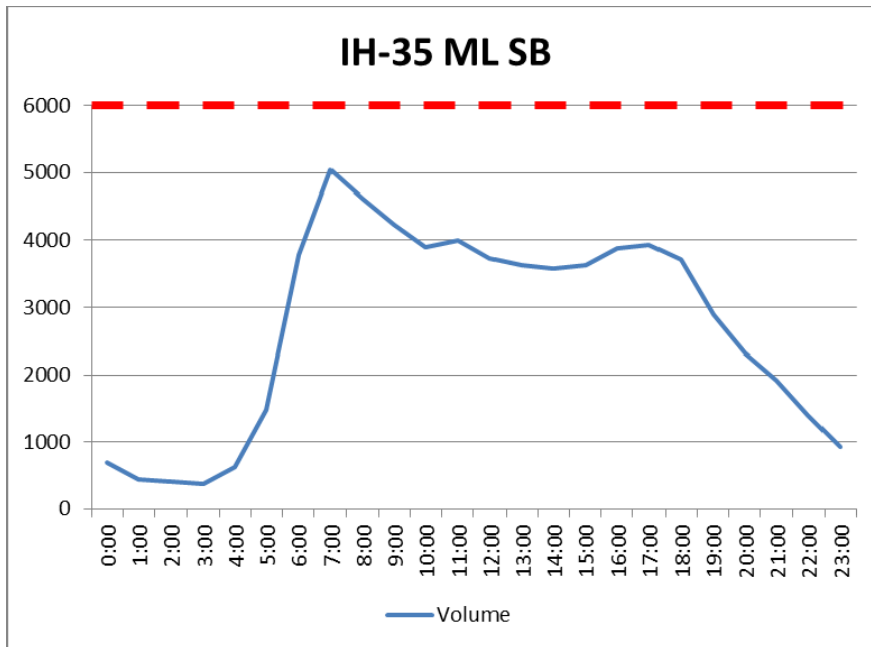


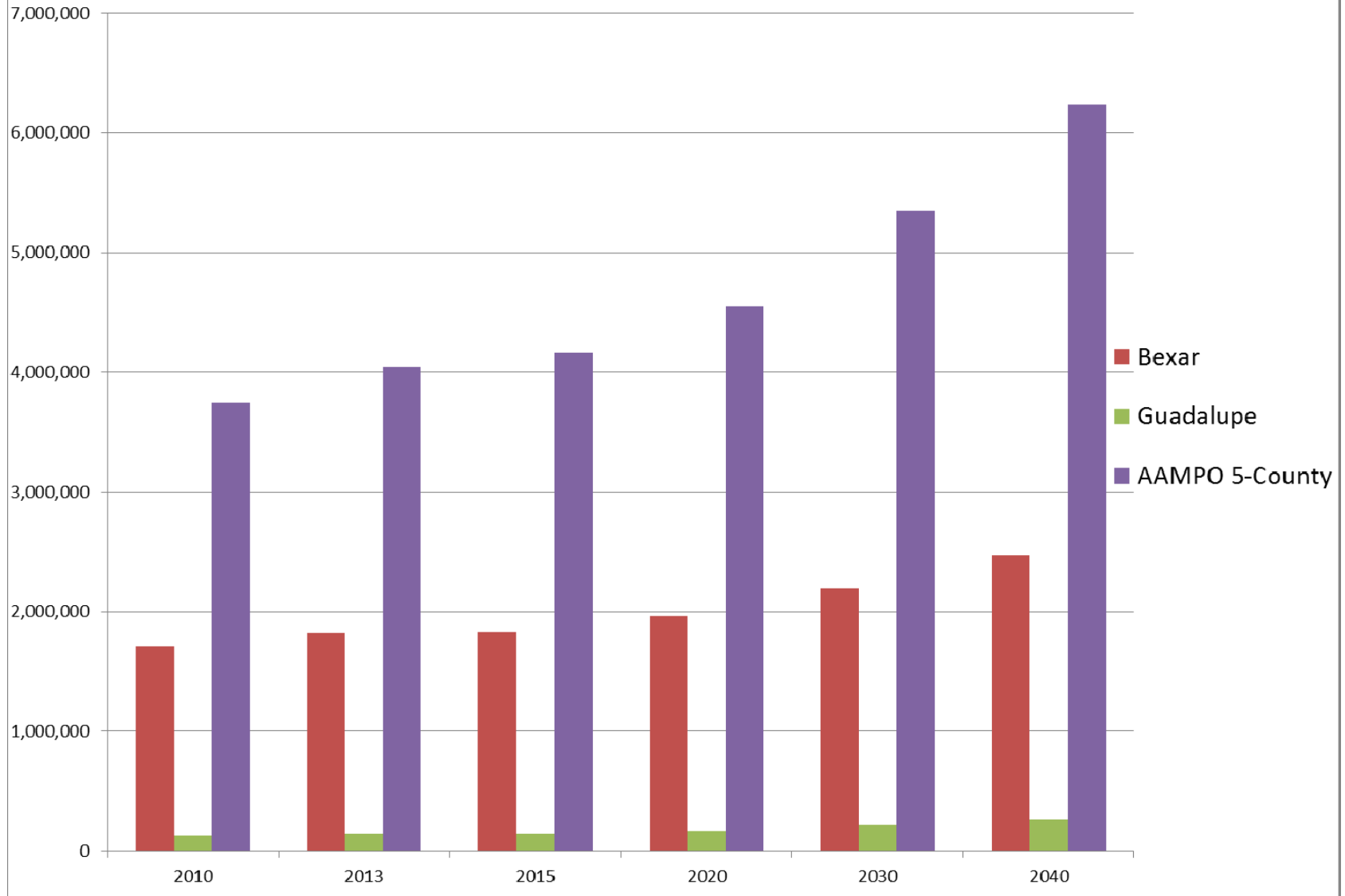
Traffic volumes on IH-35 mainline (3 lanes/direction)

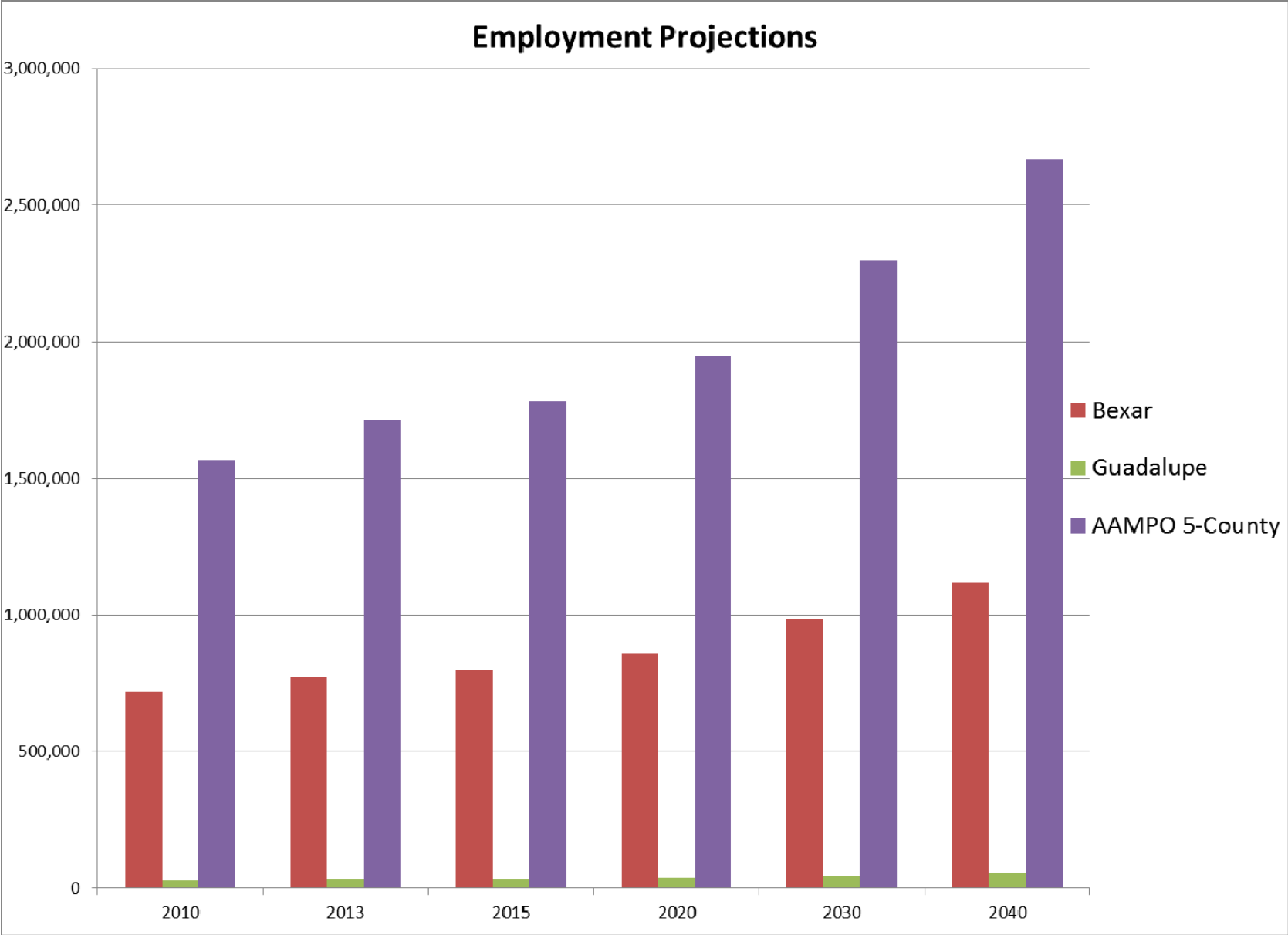


Traffic volumes on IH-35 frontage (2 lanes/direction)



Population Projections







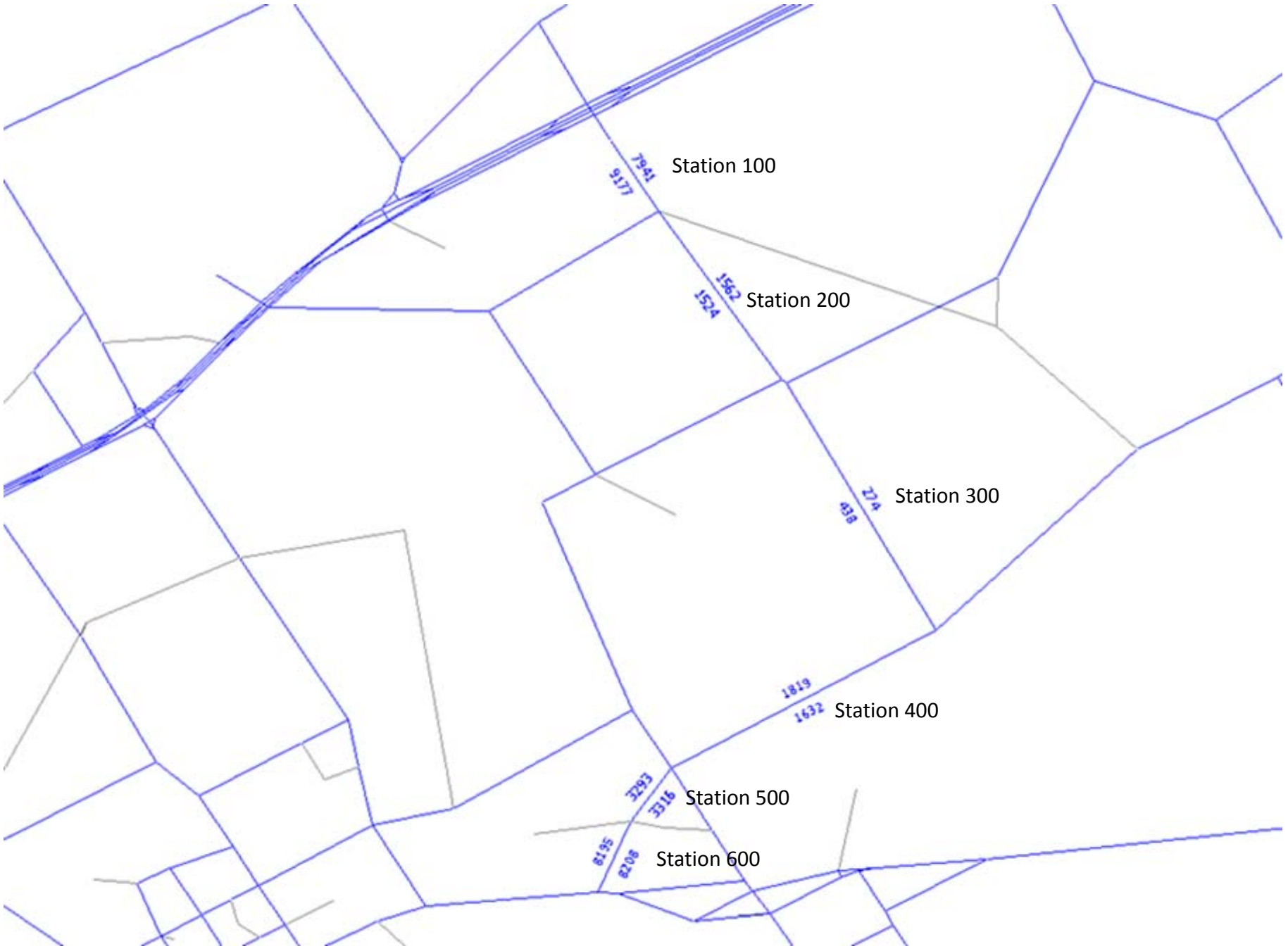
John N. Crew



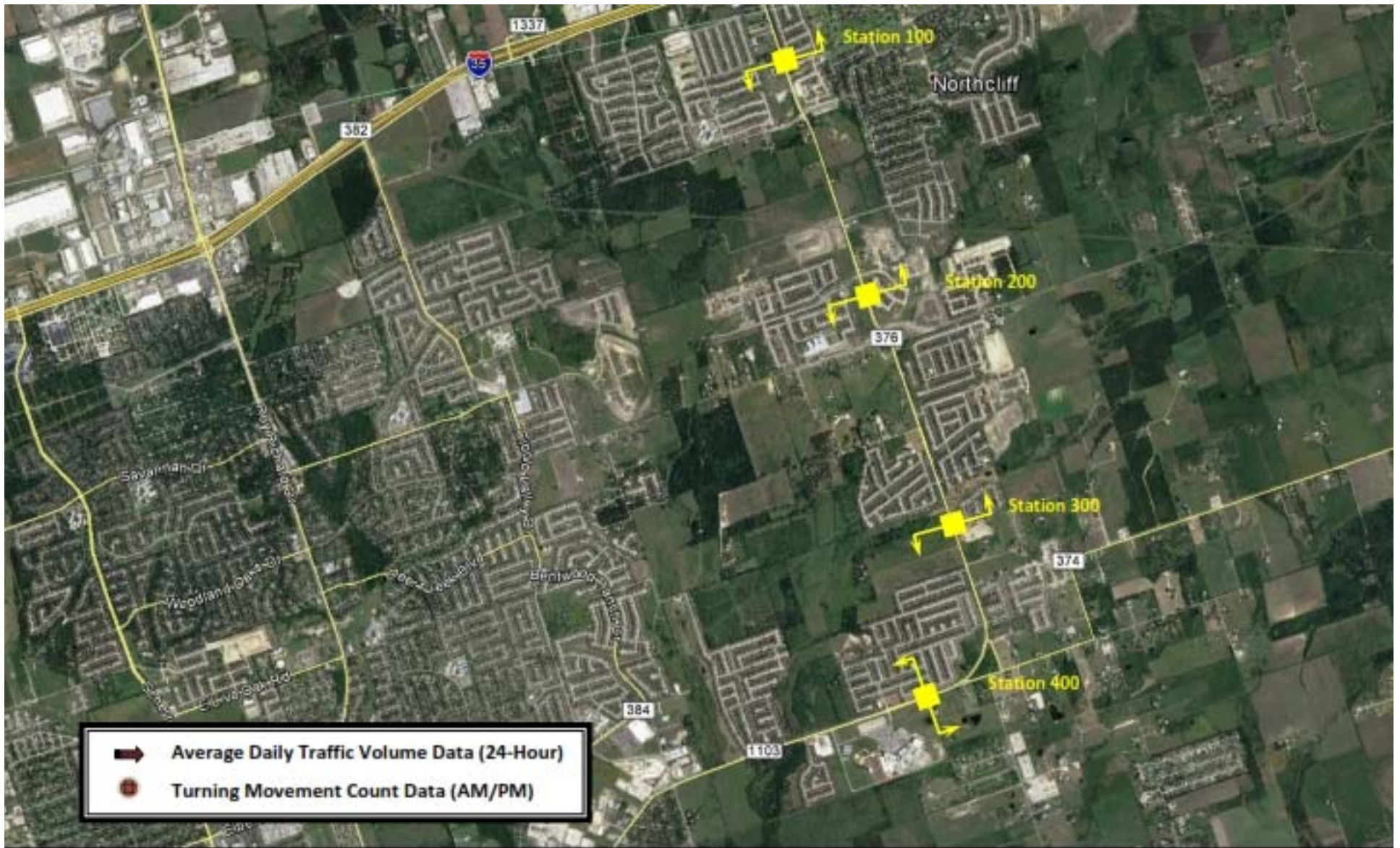
Alan D. Friedman

Traffic

Station Number	Existing MPO Model Projected Traffic Count 2020	Actual Daily Traffic Count 2016
100	17,118	19,625
200	3,086	18,109
300	712	16,905
400	3,451	12,986
500	6,609	18,627
600	16,403	12,114



Sub-level Traffic Model Consistent with Existing MPO Model

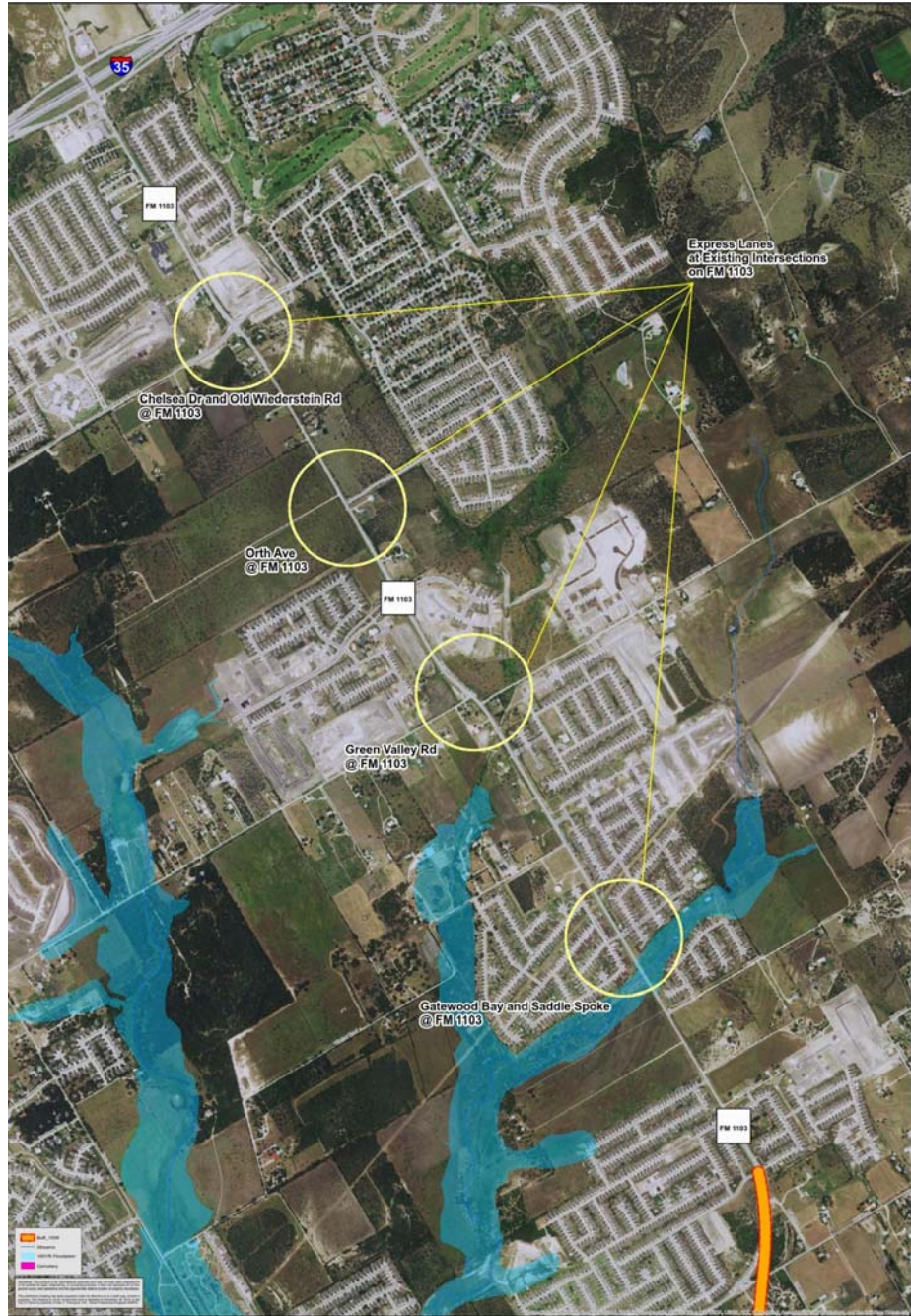


**FM 1103 between IH 35 and Rodeo Way
Cibolo, Texas**



**FM 1103 between Rodeo Way and FM 78
Cibolo, Texas**

10



<p>engineers architects surveyors</p> <p>TBPE FIRM NO. F-346</p>		Existing FM 1103 Proposed Intersection Improvements		LNW PROJ. NO. 150267	Exhibit B
		Cibolo, TX <small>DRAFT - WORK IN PROGRESS</small>		DATE 5/16/2014	
			FILE FM 1103-Proposed Intersection Improvements	DRAWN BY JS	

Cibolo Toll Road Design Charrette

Monday, May 16, 2016

Charrette Summary and Assumptions

Timeframe-Schedule:

- July 2016 Begin Environmental-Design
- July 2017 Begin Construction
- December 2019 Construction Complete
- 2020 Begin Toll Generation

Phase 1 (New Location Toll Road)

Limits:

From: Weil Rd. (Approximately)(FM 1103 Entry)

To: 600 ft N of IH 10 (No improvements to IH 10 Connection)

Assumed Length 7 miles

ROW/Environmental Issues:

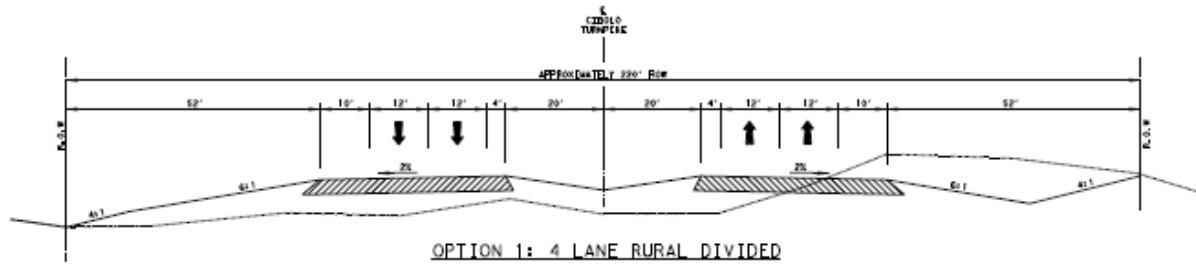
- Environmental in "Spirit of NEPA"
- High School Detention
- Noise Impact at High School
- Indian Grave
- Realignment near Weil Rd. due to impacted Property Owner concern (span westbound FM 1103 and Weil Rd.
- Transmission Lines at rear of High School
- UPRR Coordination
- Closure of CR 319
- Driveway replacement near Arizpe Rd. No plans for allowing truck traffic
- Safety Lighting at Major Intersections and Exit-Entrance Ramps
- Need to mitigate drainage at IH 10 by reconfiguring interchange geometry at IH10

Design Speed:

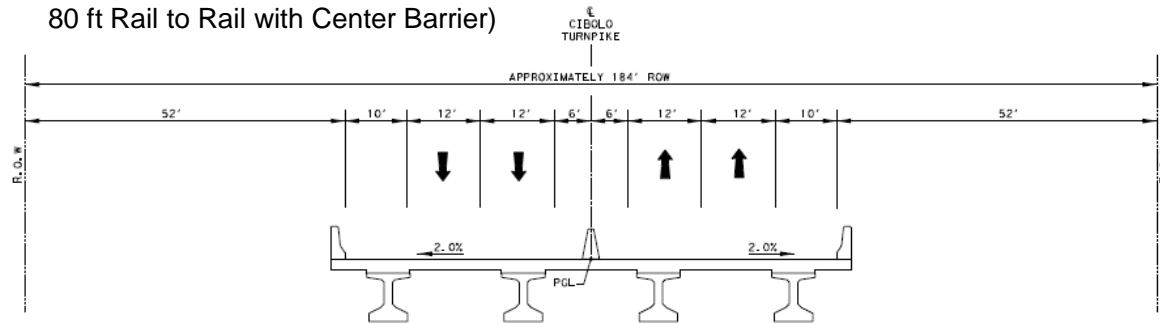
- FM 1103 (Entry) to SH 78 Spur: 50 mph dictated by Roadway Geometry
- SH 78 Spur to IH 10: 70 mph

Right of Way Width: 220 ft

Roadway Typical Section:
2 – 38 ft Roadways



Bridge Typical Section
80 ft Rail to Rail with Center Barrier



Identified Access/Toll Locations:

- FM 1103 (Entry)
- SH 78 Spur
- CR 318 (Lower Sequin Rd) CR
- 308 (Bolton Rd)

Identified Structures (Lengths)

- FM 1103 (Entry) (340 ft)
- SH 78/Railroad (400 ft)
- SH 78 Spur (170 ft)(5 lane cross street with U-turns typical) Cibolo Creek Floodplain (1000 ft) (Plus Balancing Structures) CR 318 (170 ft)
- CR 308 (170 ft)

Soundwalls

- 550 lf for High School
- 150 lf for Homes near High School





ECONOMY 5 HRS AGO



They made it big: How key Frisco figures put Texas town of 5,000 on the map for global giants to find



Cheryl Hall, Business Columnist  

- 1987:** Frisco's population reaches 5,000. George Purefoy becomes the city's first and only city manager.
- 1991:** Residents approve a half-cent sales tax to fund the Frisco Economic Development Corp.
- 1994:** Residents approve a half-cent sales tax to fund the Frisco Community Development Corp.
- 1998:** The first building in Hall Office Park opens. The Frisco Superdrome bicycle racing track opens in a public-private partnership.
- 2000:** Frisco's population reaches 33,714. Frisco ISD enrollment is 7,234. Stonebriar Centre mall opens. The Westin Stonebriar Hotel opens.
- 2004:** The Dallas North Tollway is extended to Gaylord Parkway in Frisco.
- 2005:** Pizza Hut Park, now Toyota Stadium, home of FC Dallas, opens in a public-private partnership. Ikea opens its first North Texas location.
- 2007:** The Dallas North Tollway is extended to Frisco's northern border.
- 2008:** Maher Maso is elected mayor for the first of his three terms. The NTEC Inc. med-tech accelerator building opens. Sam Rayburn Tollway along the southern border of Frisco opens. Frisco ISD's Career and Technical Education Center opens.
- 2010:** Frisco's population is 116,989. No U.S. city grew faster from 2000 to 2009. Frisco ISD enrollment is 37,043. Texas Legends D-League launches.
- 2014:** Frisco's \$5 billion mile is launched.
- 2015:** Frisco's population tops 150,000.
- 2016:** The Ford Center at The Star opens. The facility is a public-private partnership with the Dallas Cowboys, Frisco ISD and the city of Frisco. Frisco ISD enrollment tops 55,000.